



WATER PURIFICATION CHEMICALS AND PLANT (PTY) LTD

WATER THAT'S OUR BUSINESS COMPANY OVERVIEW

WATER & WASTE WATER TREATMENT PLANTS
MECHANICAL & ELECTRICAL CONTRACTS
PACKAGE PLANTS & CHEMICALS

Vision

“ WPCP's growth to date is based on the quality of our people, products and plant build workmanship.

Our vision is to continue this growth sustainably maximising benefit for our customers, employees and shareholders. As technology in our industry improves we parallel this with our own adaptation.

We strive for better than 'current best practice' on a day to day, contract to contract basis. ”



Mission

Africa needs committed companies to bring safe drinking water to its people. We are committed to being part of this.

Africa needs safe and easy ways to treat wastewater – we are on top of this.

Africa needs low maintenance and easy to operate wastewater reuse plants.

We can honestly say we are fully 'here' and motivated to be part of this mission.

Values

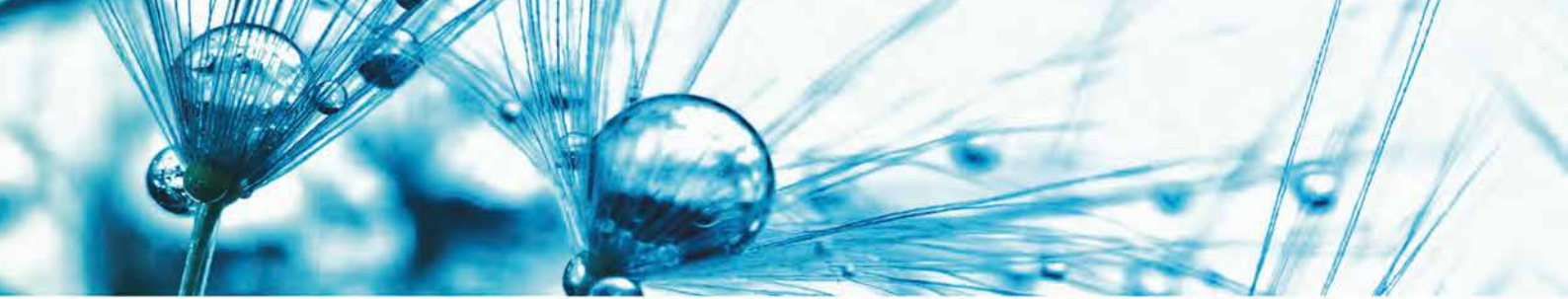
Purifying water is a responsible business.

Purifying wastewater for potable reuse is taking this responsibility to a completely new level. We take this responsibility every day.

We care – you can trust us on this.

Quality overrides all - except safety.





Introduction

WPCP was formed in 2003 and has grown to become a significant service provider in the area of water and waste water treatment in the Municipal, Mining and Industrial (Sugar) sectors.

Based in Mount Edgecombe, KwaZulu-Natal, WPCP carries out extensive research, maintaining a high level of efficiency to ensure continued customer satisfaction. Our premises include offices, laboratory and engineering workshop.

Our specialised work takes us to all areas of Southern and Sub-Saharan Africa.

As a multi-disciplinary water treatment company, we are uniquely positioned to offer expertise in several technical disciplines; from the chemical proficiency of drinking water treatment, to the finer process details of sedimentation and filtration technology, including mine water and industrial process and effluent plants; design and build major water and / or wastewater purification plants, and process water plants.

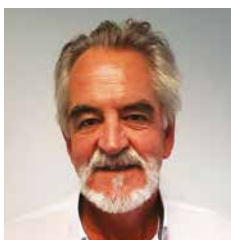
Services we offer:

- - Mechanical and Electrical Contracts including EPC; BOT
- Water and Wastewater: Water Reuse Plants; Industrial Process and Mining Process
- Design and Construction of full EPC contracts
- Chemical Dosing including:
 - Disinfection
 - Tablet Bromine or Chlorine
 - Lime
 - Poly
- Flocculants (ACH Manufacture/ACH Blends)
- Membrane Plants
- MBR based package sewage effluent plants
 - MBR
 - SWRO
 - UF
- Filtration Plants
- Modular Plants
- Packaged Water Plants
- Pump Stations





Profile of Key Personnel



MARTIN OVERY

MANAGING MEMBER AND FOUNDER OF WPCP

Martin has 46 years experience in the Water and Wastewater industry, including the Industrial and Municipal Water sectors.



DION KUTER

COMPANY MEMBER AND CONTRACTS DIRECTOR

Dion is a Civil Engineer who has vast experience in managing large Civil contracts. In the past few years, he has also managed Mechanical and Electrical contracts.



ALAN SARKIS

MANAGER ADVANCED TECHNOLOGIES

Alan is a Chemical Engineer and has approximately 20 years experience in the process design and project management of Water, Wastewater, Sea Water Reverse Osmosis, MBR, Water Re-Use Plants, Mining Process and Effluent Treatment



DYLAN SCOTT

MECHANICAL DESIGN AND CONTRACTS ENGINEER

Dylan, is a new member in our Water Project Management, and has a passion for the intricate mechanical design of Water and Wastewater Plants.



VICTOR BORCHERT

MECHANICAL DESIGN, PR ENG AND CONTRACTS ENGINEER

Victor is a professional Mechanical Engineer and has been with WPCP for approximately 13 years.

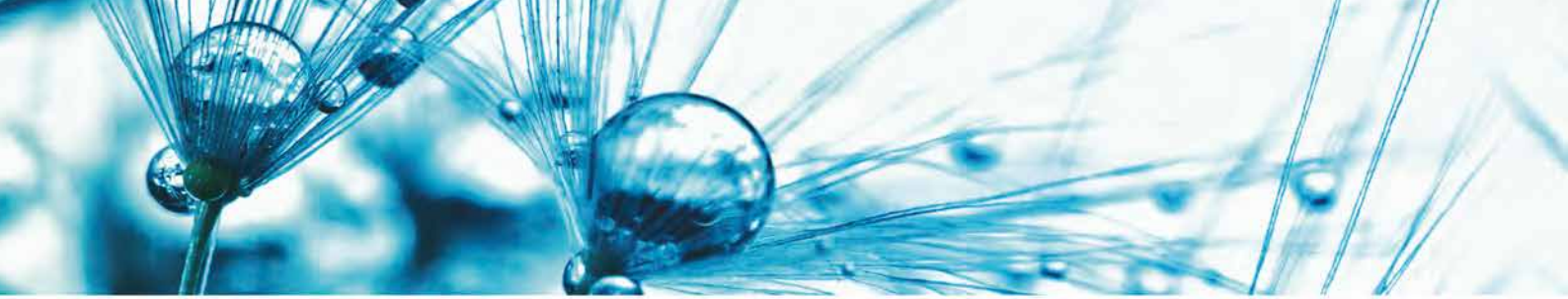


THAMI ZIMU

COMPANY MEMBER

Marketing Director with 10 years experience in the water business.





Accreditation

WPCP is an 8 ME registered company (CIBD grading), with a broad based B-BBEE level:

Level - 2 status, and subscribes to the government policies of empowerment of previously disadvantaged individuals, with a black woman ownership of 21%.

The company is a registered member of the Water Institute of South Africa (WISA).

See our website at www.wpcp.co.za



Our Clients

- Umgeni Water
- Umhlathuze Water
- Swaziland Water Services Corporation
- Bigen Africa
- Theewaterskloof DM
- Alfred Nzo DM
- Paladin Mining
- Ilembe DM
- Inyatsi Construction
- Stefanutti Stocks Coastal
- Group Five Civil Engineering
- Aveng Grinaker
- Basil Read
- Illovo Sugar



Our Team



The WPCP Team

Our Engineering Capabilities:

ENGINEERING WORKSHOP:

WPCP own and operate a fully equipped 1000m² Engineering Workshop with a 5 Ton Girder Crane.



Workshop Interior

Our Engineering Capabilities cont...



600 mm Stainless Steel
Bellmouth



1000 mm with 700 & 800 mm branches Pipe item pipe item getting
delivered at Rosetta WTW



Carbon and Stainless Steel Items



Inlet Screens



HDPE Pipe work



Lime and Bentonite Hoppers



Skid Mounted Equipment



Steel Flocculation Tanks



Steel or GRP Lamella Clarifiers



Stainless Steel Sluice Gates / Channel Gates



Clarifier Bridges

Key Project Highlights

A few of our Key / Flagship Projects:



UMGENI WATER: - DARVILL

Wastewater Treatment Works

Water Re-Use Plant

2 MI/d



UMGENI WATER:

45 MI/d Hazelmere Water Works

Upgrade - Contract Value: R 32 million



SWAZILAND WATER SERVICES CORPORATION:

20 MI/d Matasha Wastewater Treatment Plant

Contract Value: R 53 million





TRANSNET:

Durban Harbour Sand Bypass Pumping Scheme - Mechanical Contract



UMGENI WATER:

3MW Avondale Pumping Station
Mechanical Contract



UMGENI WATER:

4x2 MI/d Packaged Water Purification Plant



Contract Value:
R 42 million



SISONKE DISTRICT MUNICIPALITY:

New 9 MI/d Upgrade to Kokstad Water Works



UMGENI WATER / BASIL REID:

Greater Mpofana Bulk Water Supply Scheme & Construction of 20 MI/d Rosetta Water Treatment Plant incl : Mechanical Contract

Capacity - 20 MI/d

Contract Value - R 57 million



ZULULAND DISTRICT MUNICIPALITY / STEFANUTTI STOCKS / ORO PROJECTS JV:

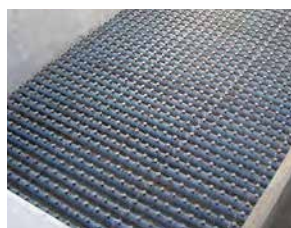
Mechanical & Electrical contact for new Water Purification Plant :

USUTHU WTW



ALFRED NZO DISTRICT MUNICIPALITY:

New 6 MI/d Water Treatment Plant - KINIRA Drift.



ILLEMBE DISTRICT MUNICIPALITY:

Sundumbili WTW Upgrade to 13MI/day



ILLEMBE DISTRICT MUNICIPALITY:

New 40 m³/hr Package Water Treatment Plant - San Souci



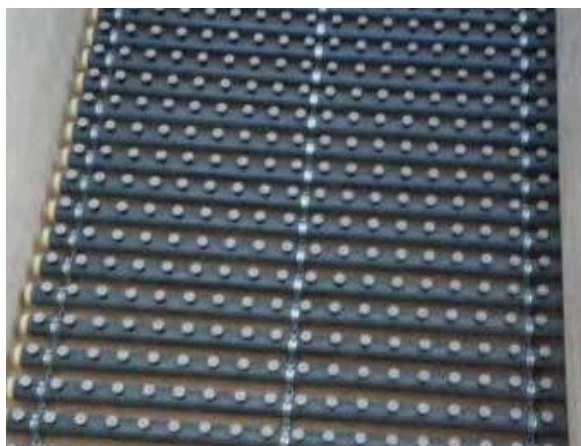
PALADIN MINING:

Keyelekera Uranium Mine, Karonga, Northern Malawi. Process Water Treatment.



SWAZILAND WATER SERVICES CORPORATION:

Nhlangano water supply scheme - construction of 20MI/day Water Treatment Plant



African Footprint



We have built plants in various places around the continent

MALAWI

Karonga

MOZAMBIQUE

Milange

SWAZILAND

Matsapha
Big Bend
Nhlangano
Lavumisa
Simunye

KWAZULU-NATAL

Durban
Hazelmere
Ladysmith
Mandini
Mooi River
Mphephetwa
Muden
Richards Bay

EASTERN CAPE

Kinira
Kokstad
Thaba Phatsoa

WESTERN CAPE

Grabouw
Strandfontein
George

The background of the entire page is a dynamic splash of water, with a large wave cresting at the top and numerous bubbles and droplets scattered throughout. The water is a clear, vibrant blue. At the top center, there is a black rectangular box containing the WPCP logo and company name.

WPCP

WATER PURIFICATION CHEMICALS AND PLANT (PTY) LTD

WATER THAT'S OUR BUSINESS

10 Sucrose Crescent | Mount Edgecombe | Durban 4302 | South Africa
PO Box 485 | Umhlanga Rocks 4320

t: +27 (0)31 502 3310 | f: +27 (0)31 502 3025 | e: info@wpcp.co.za

www.wpcp.co.za